

ARBO Shield Pro®

CLASS A AIR & VAPOUR CONTROL LAYER

ARBO® Façade Solutions (ARBO FS) is the new name for a ground-breaking initiative from ARBO, one of the longest established names in UK construction materials.

ARBOShield Pro® Class A Air & Vapour Control Layer is a high-performance air and vapour control layer featuring excellent moisture vapour management, airtightness and a low-emissivity reflective surface designed to combine Class A2-s1,d0 reaction to fire classification with high tensile strength and enhanced thermal performance.

Main Applications

ARBOShield Pro Class A Air & Vapour Control Layer is an integral part of the ARBO FS range, suitable for all light steel frame/SFS type walling applications, especially suited to high-rise and high-risk buildings such as schools, hospitals, care homes and residential blocks, helping to reduce the risk of fire spread. ARBOShield Pro Class A Air & Vapour Control Layer delivers enhanced thermal performance when installed facing a still air low emissivity cavity, improving the overall u-value and energy efficiency of the building.

For further details, contact ARBO Technical Services techservices@arbo.co.uk



Size

| | |
|-------------|--------|
| Weight, gsm | 140 |
| Roll Width | 1200mm |
| Roll Length | 50m |

A part of

ARBOSHIELD CLASS A AIR & VAPOUR CONTROL LAYER

Fixing Instructions

ARBOShield Pro Class A Air & Vapour Control Layer (AVCL) should always be installed on the warm side within the wall.

ARBOShield Pro Class A AVCL should be installed using ARBOShield Pro Class A High Tack Sealing Tape around window/door reveals and at joints or corner junctions.

Fix ARBOShield Pro Class A Air & Vapour Control Layer to the substrate using a suitable fixing method ensuring any joints in the material have a minimum overlay of 100mm.

Seal all joints using ARBOShield Pro Class A High Tack Sealing Tape ensuring the material is free for dust to obtain a clean seal. Cut the membrane around any windows/doors using a diagonal cutting

method and fold the overlap into the reveal finishing with sealing tape.

Any penetrations by cable or pipe through the AVCL should be sealed using ARBOShield Pro Class A High Tack Sealing Tape to prevent air and moisture leakage.

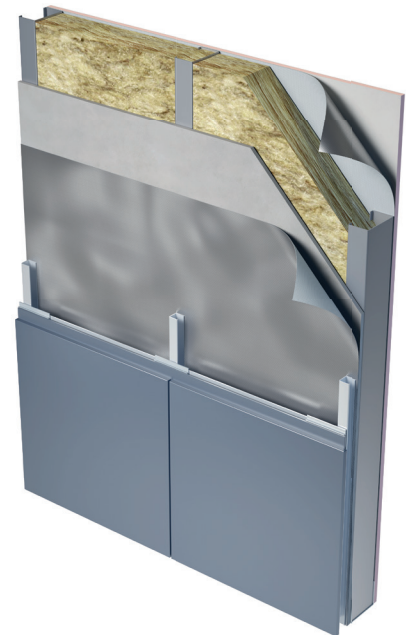
Storage

ARBOShield Pro Class A Air & Vapour Control Layer should be stored in cool, dry conditions in the upright position.

Associated Products

ARBOShield Pro Class A W1 Breather Membrane
 ARBOShield Pro Class B W1 Breather Membrane
 ARBOShield Pro External Perimeter Class A Membrane (EPAM)

ARBOShield Pro Class A High-Tack Sealing Tapes
 ARBOProtect Pro
 ARBO Intumescent and Fire-Resistant Mastics, Sealants and Foams
 ARBOSeal Pro Sealing Tapes



Example SFS type façade wall construction

Technical Data

| Product | Standard | Description | Performance |
|---------|------------------|--------------------------------|---------------------------|
| | EN 13501 | Reaction to Fire | A2-s1,d0 |
| | | Thermal Resistance R | 0.67 m ² K/W* |
| | ISO 12572 | Water Vapour Transmission (sd) | >2500 m |
| | BS EN 13984:2013 | Tensile Strength MD | 1362 N/50mm BS EN 12311-1 |
| | BS EN 13984:2013 | Tensile Strength CD | 1349 N/50mm BS EN 12311-1 |
| | BS EN 13984:2013 | Resistance to Tearing MD | 150 N/50mm BS EN 12310-1 |
| | BS EN 13984:2013 | Resistance to Tearing CD | 150 N/50mm BS EN 12310-1 |

Note

*When facing a 20mm still airspace

Important: The information in this leaflet is given in good faith and based on results gained from experience and tests. However, all recommendations or suggestions are made without guarantee since the conditions of use are beyond our control. It is the user and specifier's responsibility to ensure ARBO product is suitable for the intended use: consult ARBO Technical Services for specific advice. Goods are supplied subject to the Company's terms and conditions of sales, a copy of which is available on request.

CARLISLE® Adsheed Ratcliffe & Co. Ltd

United Kingdom
 Derby Road | Belper

Derbyshire
 DE56 1WJ

T +44 (0)1773 826661
 F +44 (0)1773 821215

E info.arbo@ccm-europe.com
 www.arbo.co.uk

